

PE184T-7.5-2

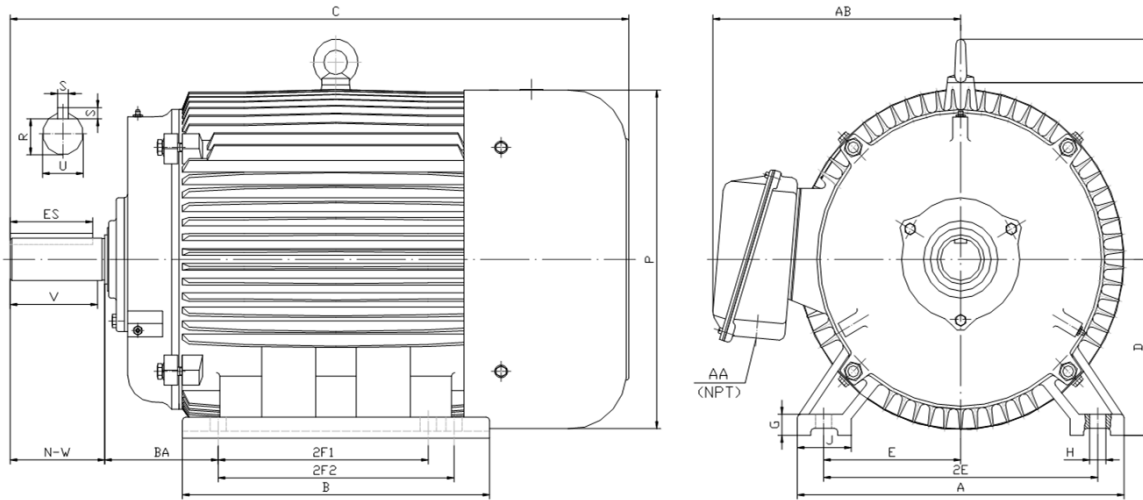
GENERAL PURPOSE ELECTRIC MOTOR

NEMA PREMIUM EFFICIENCY

TOTALLY ENCLOSED FAN COOLED

INVERTER DUTY 10:1 CT; 20:1 VT - NEMA MG1 PART 31

Factory Certified for T2B Class I, Division II, Groups A,B,C & D and Class II, Division II, Groups F & G



DIMENSIONS

HP	RPM	Frame	MOUNTING														
			A	B	C	D	G	H	J	E	2E	2F1	2F2	O	P	T	BA
7.5	3600	184T	9.50	8.30	17.10	4.50	0.60	0.41	2.00	3.75	7.50	4.50	5.50	9.10	8.70	1.60	2.75

Shaft Extension, Key Set						Conduit Box		Bearings		Mount
U	V	R	S	ES	N-W	AA	AB	DE	ODE	
1.125	2.50	0.986	0.250	1.78	2.75	0.75	7.50	6306-ZZ	6306-ZZ	F1

BEARING LUBRICATION: The bearings come lubricated with Mobil Polyrex EM Polyurea Grease.



Electrical Helper

“Practical Straight Forward Electric Wiring Solutions Since 1928.”

For Fast & Friendly Assistance Call Us
888-226-4917
Hours 8:00AM-5:00PM CST



PE184T-7.5-2

GENERAL PURPOSE ELECTRIC MOTOR

NEMA PREMIUM EFFICIENCY

TOTALLY ENCLOSED FAN COOLED

INVERTER DUTY 10:1 CT; 20:1 VT - NEMA MG1 PART 31

Factory Certified for T2B Class I, Division II, Groups A,B,C & D and Class II, Division II, Groups F & G

PERFORMANCE DATA

HP	RPM	Frame	Voltage	Frequency (Hz)	Full Load S.F.	Insulation Class	NEMA Design	Slip (%)	NEMA Code	Enclosure Type	IP Rating	Max. Ambient
7.5	3500	184T	208-230/460	60	1.15	F	B	2.8	H	TEFC	55	40° C

Amps (460V)		Efficiency (%)				Power Factor			Torque (ft-lb)			DE Bearing	ODE Bearing	Connection	Weight (lbs.)
FLA	LRA	100%	75%	50%	Min.	100%	75%	50%	FLT	LRT %	BDT %				
9.0	63	89.5	89.0	88.0	87.5	0.880	0.830	0.730	11.3	190	300	6306-ZZ	6306-ZZ	9 Lead 2Y/Y	117

NAME PLATE

													CONNECTION DIAGRAMS				
INVERTER DUTY 20:1 VT; 10:1 CT																	
CAT NO: PE184T-7.5-2				FRAME 184T				PHASE 3				208 - 230V 					
HZ 60		S.F. 1.15		HZ 50		S.F. 1.0		ENCL TEFC		IP 55							
HP 7.5		RPM 3500		HP 7.5		RPM 2875		DUTY CONT		DES B							
VOLTS 208-230/460				VOLTS 190/380				AMB 40° C		INS F							
FLA 19.9 - 18 / 9		FLA 22/11				DE BEARING 6306-ZZ											
CODE H		P.F. 0.88		CODE G		P.F. 0.90		ODE BEARING 6306-ZZ									
EFF 89.5		MIN 87.5		EFF 87.5		MIN 85.5		LUB: Mobil Polyrex EM									
MOTOR WEIGHT 117 LBS		CONNECTION 9 Lead 2Y/Y				SER NO											
General purpose use on industrial machinery installed in damp, dusty or dirty environments. Hernando, Mississippi																CC 082A	
									460V 								

APPLICATIONS:

General purpose use on pumps, fans, blowers, compressors, conveyors, material handling and other industrial machinery installed in damp, dusty or dirty environments.



Electrical Helper

"Practical Straight Forward Electric Wiring Solutions Since 1928."

For Fast & Friendly Assistance Call Us
 888-226-4917
 Hours 8:00AM-5:00PM CST